

## JASMINE RESIDENCE

LUXURY, BEAUTY, RELAXATION IN THE VERY HEART OF NA'AMA BAY, SHARM EL SHEIKH

On the sunny slopes of Namaa Bay, overlooking the Turquoise waters of the bay and the fascinating pink Mountains of Sinai is the Jasmine Residence a peaceful Oasis of unique properties with lush Gardens surrounded by refreshing swimming pools.

The unique design in the residential buildings brings privacy, great views and cozy interiors to each apartment.

The resort overlooks the sea and the nearby fun-filled Cleo Park, a popular themed aqua park

The properties enjoy great views of the Beautiful Mountains or the refreshing pools and gardens.

The perfect choice for a property that can be your dream holiday home and an excellent investment opportunity.



**PRICES FROM 250,000 EGP**

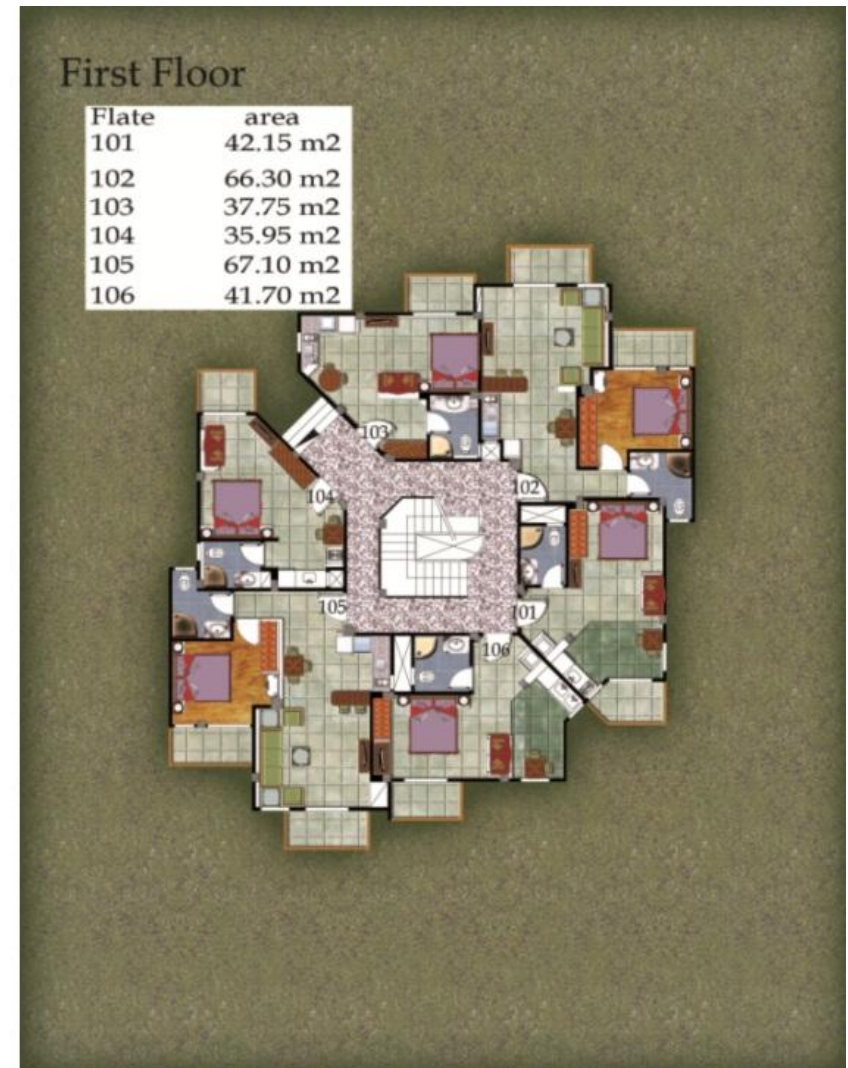
Visit us at: [www.sharmelsheikhrealestate.com](http://www.sharmelsheikhrealestate.com)

Contact us: [coordinator@sharmelsheikhrealestate.com](mailto:coordinator@sharmelsheikhrealestate.com)

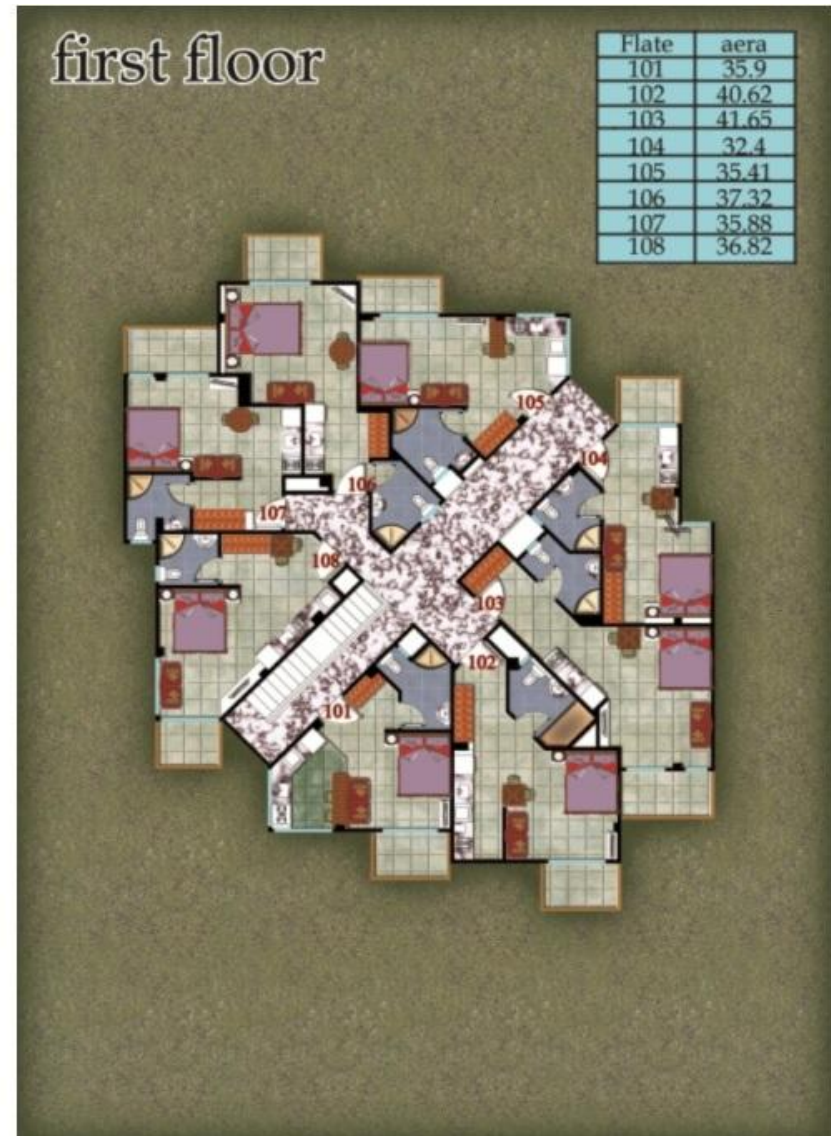
## GENERAL LAYOUT



**Buildings A17, A18, B17, B18**



**Buildings A2, A4, B1**





Available Sizes upon request for Studios & 1 bedroom Building A4, A2, B1



**Available Sizes upon request for Studio 1& 2 bedrooms Building A4, A2, B1**



Project	Facilities	Distances
<p> <b>Land plot 40,000 m2 - 20% only of Buildings, 80% pools and gardens. Four star hotel.</b>  <b>Whereas the hotel facilities and Services are to be used by Residential units' owners.</b>  <b>Studio, 1 bedroom apartments. All with balconies.</b>  <b>First handovers 30 month from the Date of signing contract.</b>  <b>Sharm el Sheikh Real Estate Property Management &amp; Rental Option with interesting rental Revenue yield per annum.</b> </p>	<p> <b>3 Swimming Pools – each with Small pool for children.</b>  <b>Gym.</b>  <b>Supermarket.</b>  <b>WI-FI Internet.</b>  <b>Car Parking Spaces.</b>  <b>Kids Club.</b>  <b>Commercial Mall Administrative and Commercial.</b>  <b>Shops.</b>  <b>Restaurants.</b>  <b>20% discount on food an Beverages in the hotel.</b>  <b>Housekeeping and laundry. Services.</b>  <b>Central Satellite.</b> </p>	<p> <b>1 minute walk to Aqua Park</b>  <b>5 minutes walk to Namaa Bay</b>  <b>7 minutes walk to beach</b>  <b>15 minutes drive to airport</b>  <b>15 minutes drive to PGA 18 Holes golf course</b>  <b>15 minutes drive to Old Sharm</b> </p> 

Financial Plans	Additional Expenses
<p><b><u>CASH PAYMENT</u></b> 10% discount on 100% cash payment</p> <p><b><u>INSTALMENTS</u></b> Holding deposit 10% Contracting deposit 25 % 15 % after 6 months 8 quarterly payments interest-free over 2 years</p> <p><b><u>MULTI-PURCHASE DISCOUNTS</u></b> Discount 5 % for 2 apt. 7.5 % for 3 apt., 10 % for 6 apt. Cumulative discounts 15% maximum</p> <p style="text-align: center;"><b>No commission from buyers</b></p> 	<p><b><u>MAINTENANCE FEES</u></b> Includes: general maintenance and cleaning of all communal areas, swimming pools, gardens, public illumination, garbage collection, pesticides, 24H security One-off payment upon handover: Studio: 20,000 EGP 1 bedroom apartments: 25,000 EGP 2 bedroom apartment 35,000 EGP <b>Plus a 15% of the initial sum to be paid every 3 years</b> <b>Example for a studio 3rd year=3000 EGP, 6 th year=3,450 EGP</b> WATER AND ELECTRICITY METERS: 3,300 EGP for both FULL FURNITURE PACKAGES (optional) Includes: full furniture, appliances, air conditioning, household basics (bed sheet, towels, dishes, etc.), fitted kitchen, delivery and installation. Different prices depending on property area and number of bedrooms...</p> 



**CONTACT OR VISIT US AT:**

**Sharm El Sheikh Real Estate**

24 Sultan Kabous Street,  
Namaa Bay  
Sharm El Sheikh  
41669, Egypt  
Every day 10am - 12pm

**Sharm El Sheikh Real Estate**

Nabq Branch, La Strada  
Mall, Shop G46, opposite  
Oriental & Coral Sea  
Resorts  
Nabq, Sharm El Sheikh  
41669, Egypt

**Sharm El Sheikh Real Estate**

**HEAD OFFICE**

Working Hours:  
10 PM to 6 PM  
Building 16 B,  
Khazan Street,  
Marine Club, Hadaba  
Tel: +20-12-7676650  
Fax: + 20-69-3666080

Visit us at: [www.sharmelsheikhrealestate.com](http://www.sharmelsheikhrealestate.com)

Contact us: [coordinator@sharmelsheikhrealestate.com](mailto:coordinator@sharmelsheikhrealestate.com)