

The Jewel of Montazah

- Montazah is one of the prime locations in Sharm El Sheikh located between Sharks Bay & Nabq Bay.
- It is emerging as the most desirable place for property in Sharm El Sheikh.
- Only 10 minutes from the airport and 15 minutes from the heart of Sharm.
- Located only few meters from Ras Bob (World top class diving spot) and the beach with views of the Red Sea, Tiran Island and Mountains.
- Only 10 minutes away from top class Golf course & Cycling Lane in the Nabq area.



TYPES OF PROPERTIES	PRICES FROM	SIZES	MAINTENANCE Per year
<ul style="list-style-type: none"> ✓ 1 & 2 Bedroom Apartments ✓ 2 Floors Duplex 	<ul style="list-style-type: none"> ✓ 1 Bedroom Apartments Price from 503,500 EGP ✓ 2 Bedrooms Apartments Price from 951,050 EGP ✓ 2 Floors Duplex Price 2,548,560 EGP 	<ul style="list-style-type: none"> ✓ 1 Bedroom Apts. 45 & 65 m² ✓ 2 Bedroom Apts. 80, 85 & 100 m² ✓ 2 Floors Duplex 220 m² 	<ul style="list-style-type: none"> ✓ 1 Bed Apts. 4,500 EGP ✓ 2 Bed Apts. 5,500 EGP ✓ Duplex 11,000 EGP

Financial payment plan

- 1) Deposit to be paid 10,000 EGP, for top floor 20,000 EGP
- 2) 1st instalment 50% to be paid within 28 days from deposit payment date
- 3) 2nd instalment 25% to be paid after 6 months
- 4) 3rd instalment 20 % to be paid after 12 months
- 5) Final instalment to be paid upon completion

One Bedroom Apartments:

Luxurious finish good size Fully Air-conditioned Apartments, Incl. Bedroom & Open Plan Kitchen, a good sized Living area, Bathroom " Bath & Shower " and Balcony.

Two Bedroom Apartments:

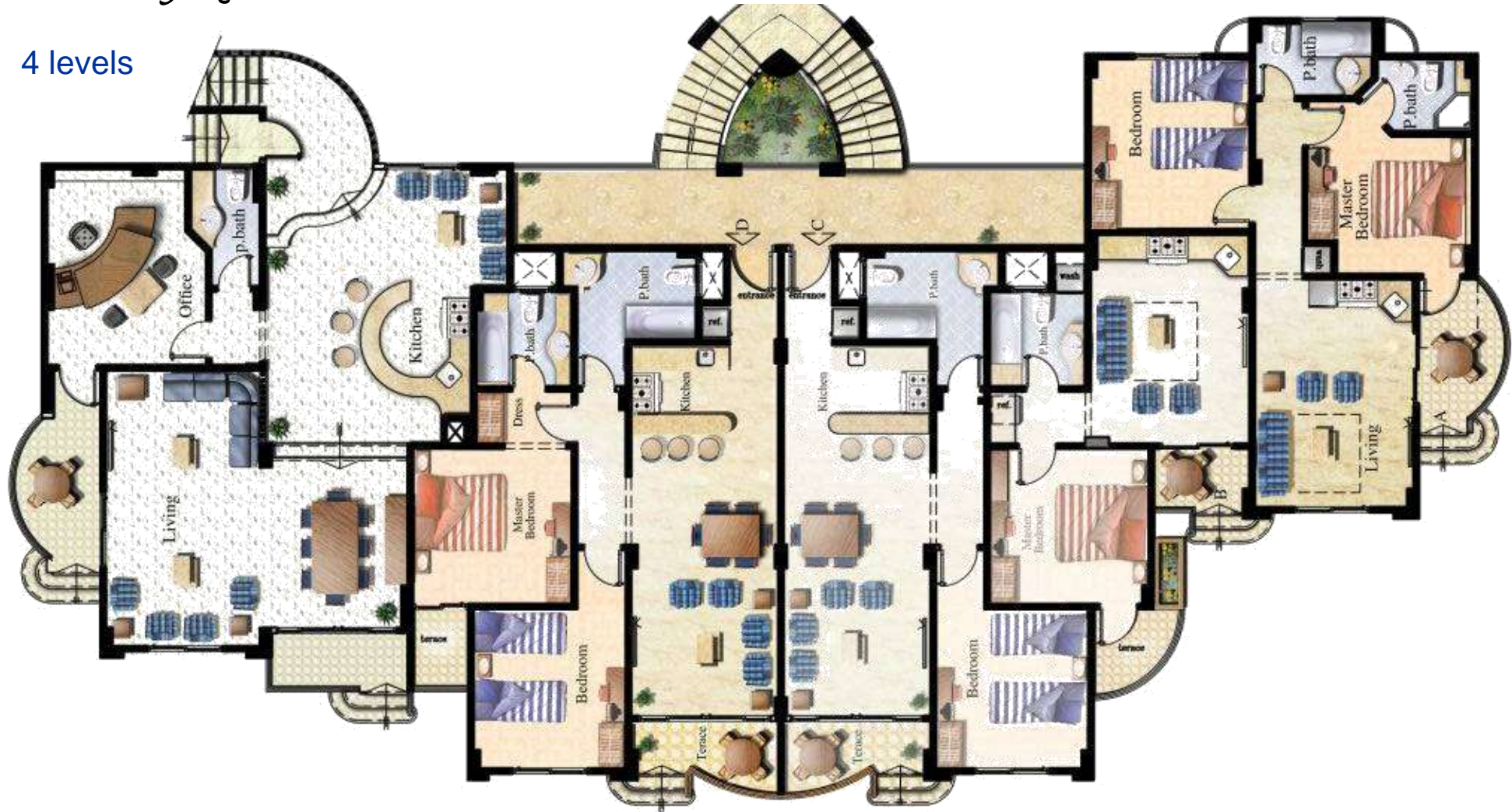
Luxurious finish good size Fully Air-conditioned Apartments incl. a MASTER Bedroom with en-suite Bathroom & second Bedroom, Open Plan Kitchen and a good size Reception, Main Bathroom " Bath & Shower " and Balcony.

Duplex 3 Bedrooms, 220 sqm:

Luxurious finish and good size fully Air-conditioned Duplex approx. 220 sqm incl. 3 Bedroom all with en-suite, office & Open Plan Kitchen, a good sized Living area, Bathroom "Bath & Shower" and Balcony, private entrance and large garden.

Building layout

4 levels



1 Bedroom apartment



2 Bedrooms apartment



Duplex

Ground floor plan



First floor plan





PLANNED FACILITIES

- ✓ Garden
- ✓ Gym
- ✓ Outdoor Jacuzzi
- ✓ Private Pool
- ✓ BBQ Area
- ✓ 24Hr Porter Service
- ✓ Intercom for each Apartment
- ✓ Parking for Residents

Main Facilities

- ✓ Suitable For Children
- ✓ Suitable For Elderly
- ✓ Disabled Access
- ✓ Swimming Pool
- ✓ Private Garden
- ✓ Off Road Parking
- ✓ Air Conditioning
- ✓ Satellite / Cable TV
- ✓ Telephone / Fax
- ✓ Internet Access
- ✓ Maid Service
- ✓ Communal roof
- ✓ Communal garden

Activities

- ✓ Golf
- ✓ Water sports
- ✓ Horse Riding
- ✓ Cycling
- ✓ Swimming
- ✓ Diving
- ✓ Walking / Hiking
- ✓ The Complex has a direct access (only few meters) to the stunning Private Beach of Montazah that can take you to Ras Nasrani & Ras Bob

Advice:

Naturally, you need to be prepared to wait for the property to be completed before you can move in. Sharm El Sheikh Real Estate customer care team will keep you updated on the progress of your property at all times. There's always a Sharm El Sheikh Representative to answer your questions.

For more information, our team will be at your service.

Email: coordinator@sharmelsheikhrealestate.com

Skype: sharmelsheikhrealestate

Office Phone: 002-012-7676650

Address: P.O.Box 355
5 El Guindy Mall, Opposite Pacha Club
41669 Sharm El Sheikh, Egypt